

6 Plumeria Court

Table of Contents

- | [Property Details](#)
- | [Photo Gallery](#)
- | [Map](#)
- | [Contact For Inspection](#)

Property Details

6 Plumeria Court, GOONELLABAH



SOLD BY THE WAL MURRAY TEAM

3  **1**  **1** 

Investors, first home buyers, young and old 💎 this brick and tile home is a real beauty. Tucked away in Goonellabah with leafy surrounds and koala corridors 💎 the property will suit many buyers wanting a low maintenance and affordable single level home.

- 3 Bedrooms
- 1 Bathroom
- 1 Garage

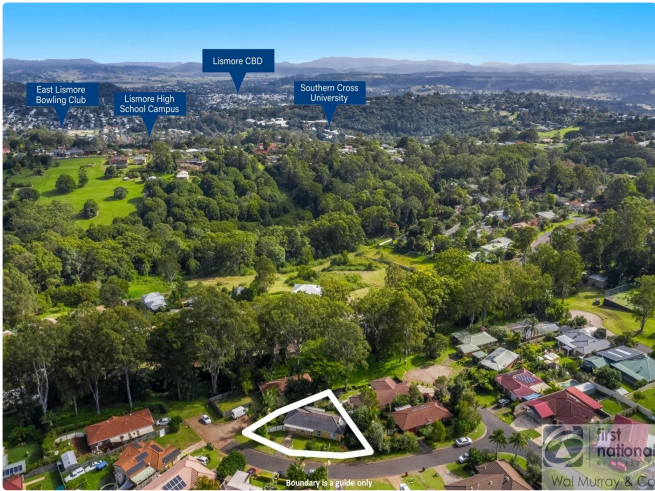
The home has 3 bedrooms, separate lounge and dining areas with central air-con, plus a full bathroom with separate toilet. The dining area leads outside to covered patio, which overlooks the fenced backyard. Perfect yard for the family pet, or the keen gardener wanting space

The home is located close to Shopping centre and local park for the kids to play. Don't miss this great opportunity to get in into the market. Call today

\$469,000

Photo Gallery

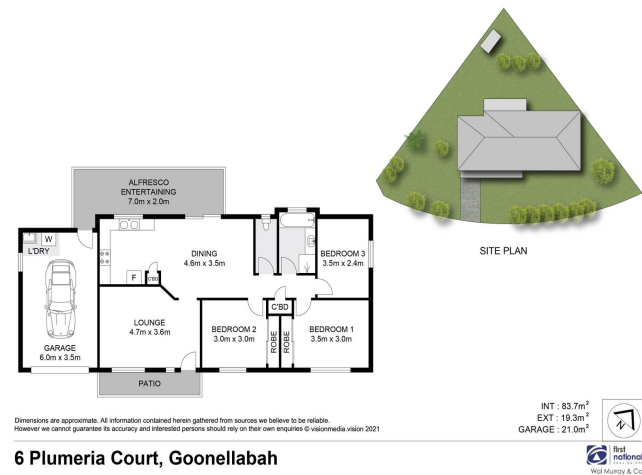




Dimensions are approximate. All information contained herein gathered from sources we believe to be reliable. However we cannot guarantee its accuracy and interested persons should rely on their own enquiries @ visionmedia vision 2021

6 Plumeria Court, Goonellabah

INT : 83.7m²
EXT : 19.3m²
GARAGE : 21.0m²



Dimensions are approximate. All information contained herein gathered from sources we believe to be reliable. However we cannot guarantee its accuracy and interested persons should rely on their own enquiries @ visionmedia vision 2021

6 Plumeria Court, Goonellabah



Map



Contact For Inspection



BENJAMIN CONTE

LICENSED REAL ESTATE AGENT

0408 368 913

ben@walmurray.com.au